

PART OF N.W. 1/4 OF SECTION 22, T.5N., R.1W., S.L.B.&M.
MAIN POINT SOUTH SUBDIVISION
 LOTS 30 TO 37, 43 TO 52 & 68 TO 76

112

TAXING UNIT: 27

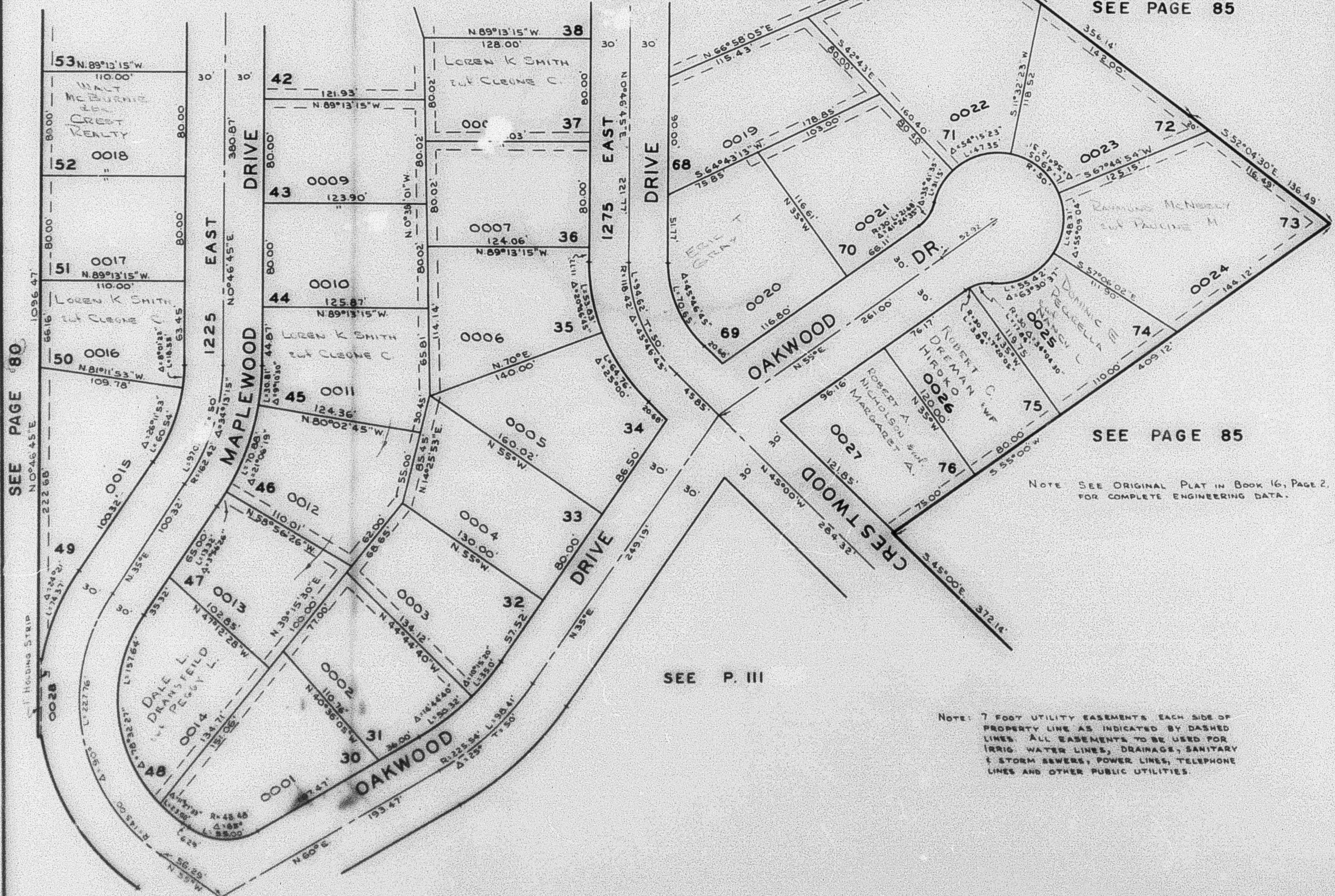
IN SOUTH OGDEN CITY
 SCALE 1" = 60'

PREFIX: 07-112

EXCEPT WHERE OTHERWISE SHOWN,
 ALL LOTS ARE OWNED BY:
 ROBERT H. HINCKLEY, INC.

SEE P. 113

SEE PAGE 85



SEE PAGE 85

NOTE: SEE ORIGINAL PLAT IN BOOK 16, PAGE 2,
 FOR COMPLETE ENGINEERING DATA.

SEE P. III

NOTE: 7 FOOT UTILITY EASEMENTS EACH SIDE OF
 PROPERTY LINE AS INDICATED BY DASHED
 LINES. ALL EASEMENTS TO BE USED FOR
 IRRIG. WATER LINES, DRAINAGE, SANITARY
 & STORM SEWERS, POWER LINES, TELEPHONE
 LINES AND OTHER PUBLIC UTILITIES.